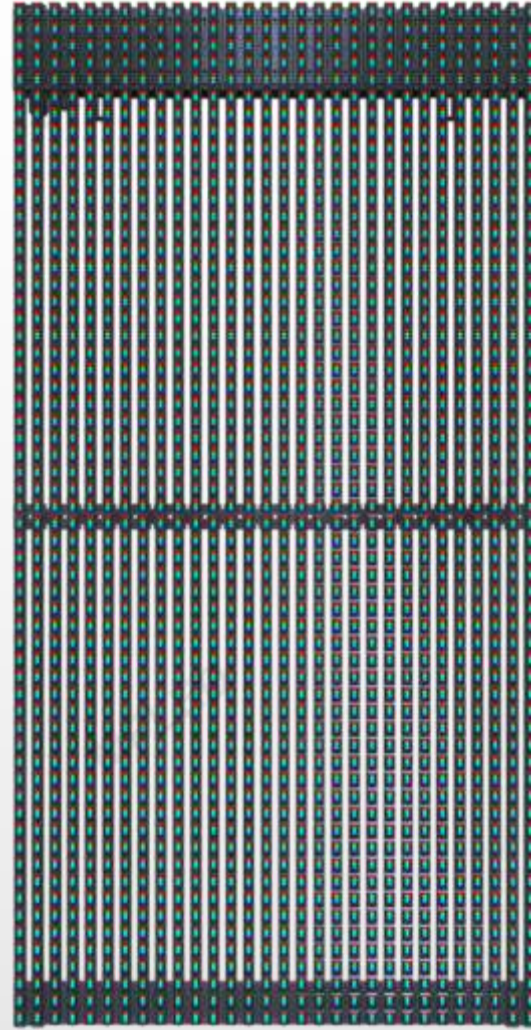


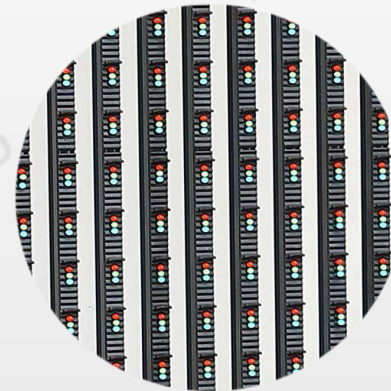
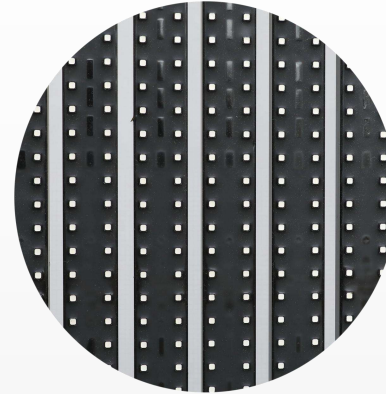
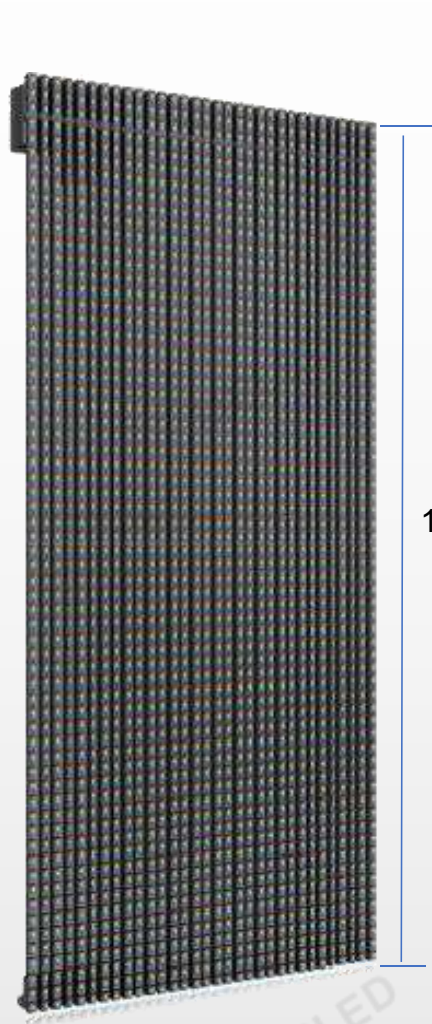
# CT P31.25

Building Outside Curtain LED Display

---

**BUILDING  
SMART  
LIGHTING**







Only **17** Kg/m<sup>2</sup>

66% weight loss than traditional Display(56kg/m<sup>2</sup>)







Ventilation 60%-90%  
Ensure the natural ventilation of buildings

Transparent 70%-92%  
Ensure the natural lighting of buildings



1. The totally aluminum material for super heat release to 80%.
2. The complete glue-pouring technology to ensure military grade IP65.
3. Support for work under some extreme weather  $-40^{\circ}\text{C}\sim 60^{\circ}\text{C}$ .
4. Only one connector plug for cabinet to reduce 90% failure rate.
5. High Ventilation design to well resist 11 grade wild wind.







## High Speed Installation

---

Single person installation **within 10s** for one aquare meter

**60 times** installation speed than traditional outdoor led display

### Convenient Maintenance

Patent structural design and only 3 minutes for quick rear&front maintenance for one led cabinet

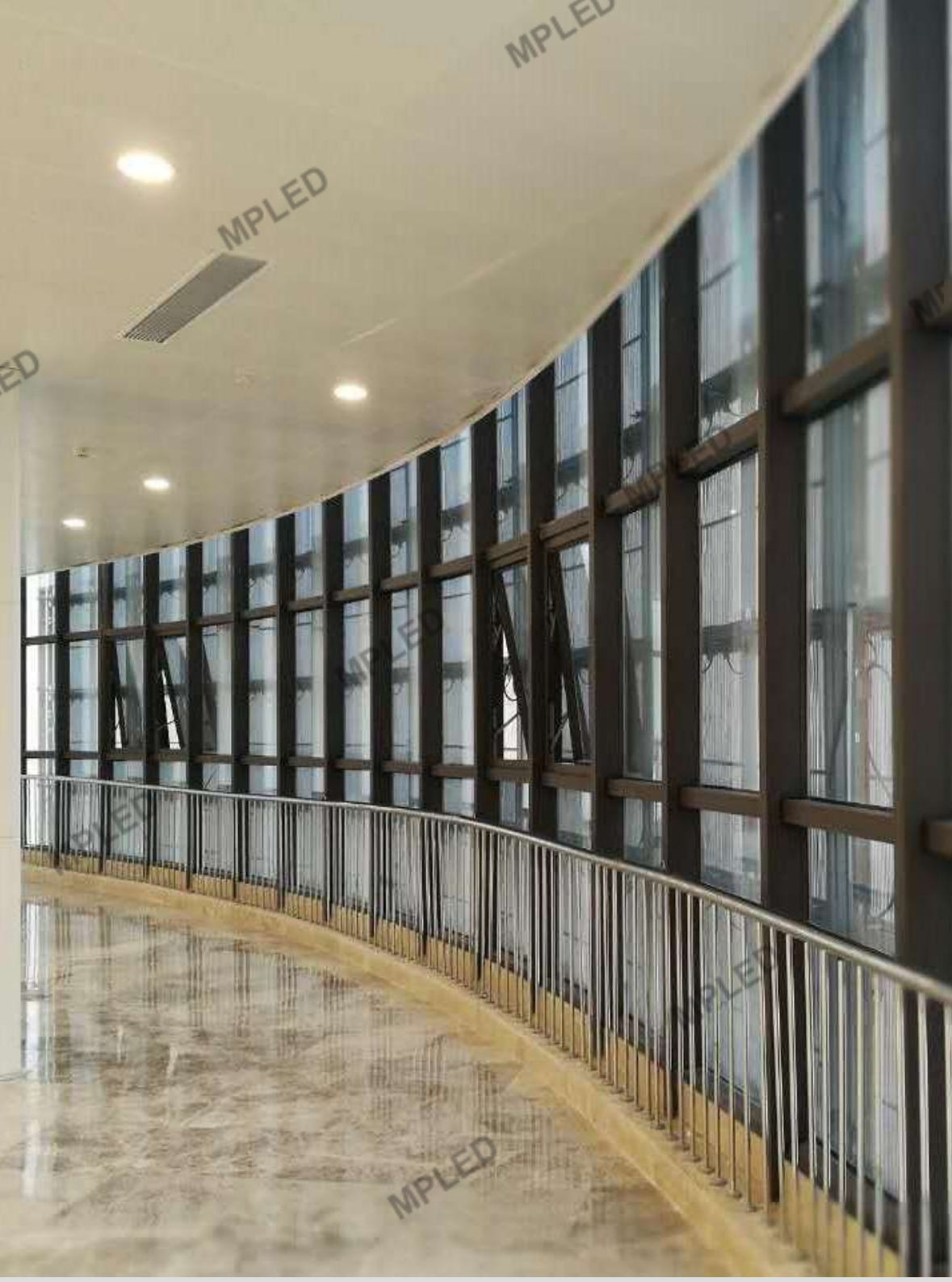




**7000-10000cd/m<sup>2</sup>** brightness as option.

Only 5.3mA current at 25°C current temperature.





## Why choose LED Curtain?

---

Compared with traditional LED display

Save 50% steel structure cost

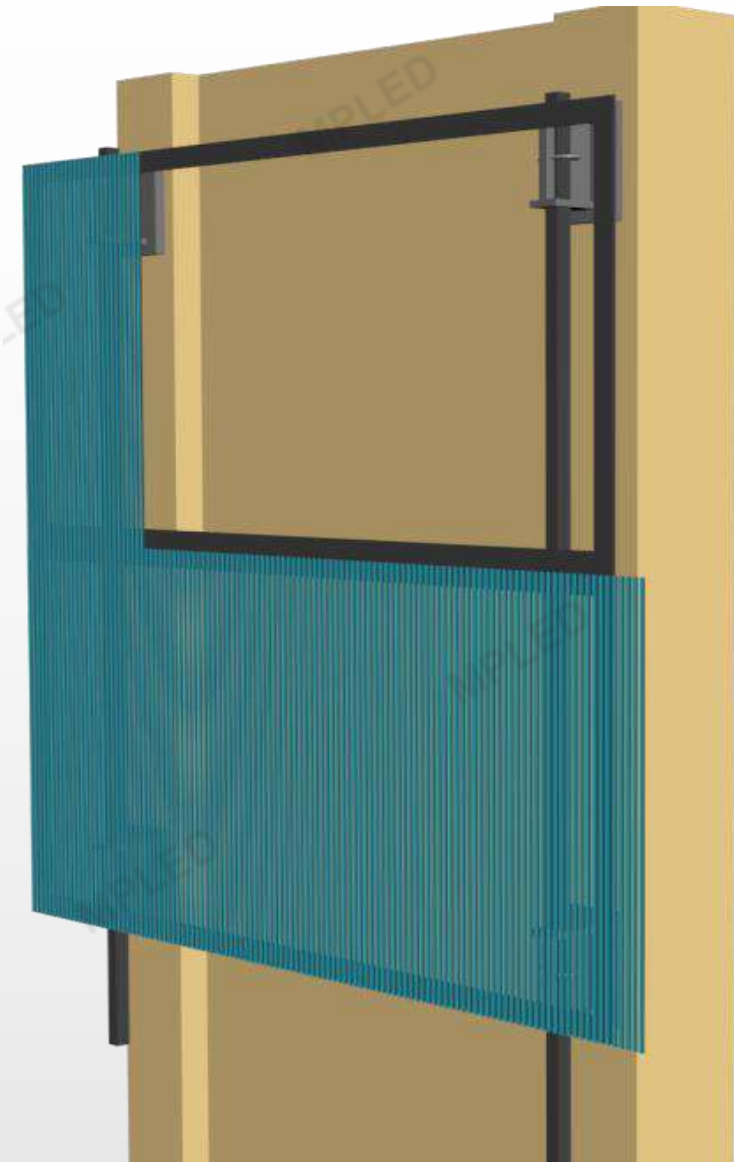
Save 80% Labor cost

Save 55% freight cost

Save 80% maintenance cost

Save 60% power energy

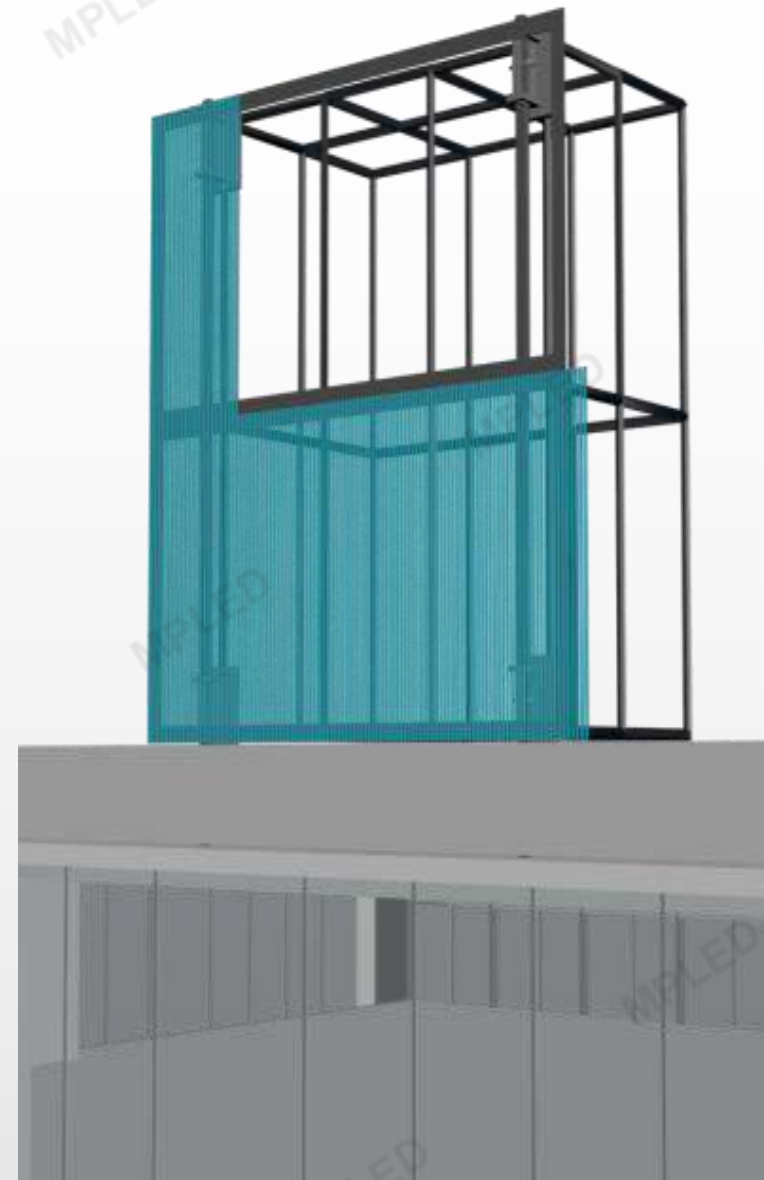




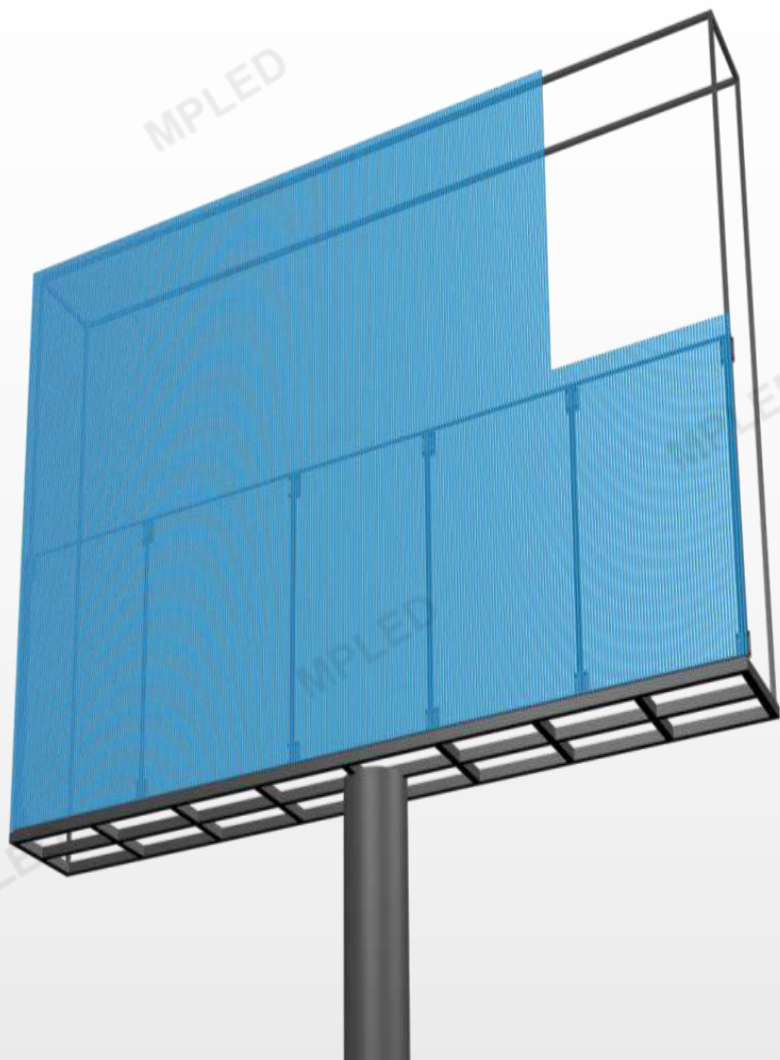
Wall Mounting



Glass wall Mounting



Building Roof Installation



Pillar Installation



Ceiling Installation





## PROJECTS & APPLICATION



## Specification for Outdoor P31.25 models

Pixel pitch	31.25mm	31.25mm
LED configuration	SMD2727	DIP346
Brightness	3500 nits	6500 nits
Viewing angle	140°/ 140° (50% brightness)	140°/ 140° (50% brightness)
Scan mode	1/8	1/2
Refresh rate	1920Hz	1920Hz
Processing	16 bits	16 bits
Module size	500mm x 125mm (W x H )	500mm x 125mm (W x H )
Panel size	500mm x 1000mm (W x H )	500mm x 1000mm (W x H )
Panel weight	7kg	7kg
Input voltage	AC100~240V 50/60 HZ	AC100~240V 50/60 HZ
Power consumption (Avg)	90W/sqm	105W/sqm
Power consumption (Max)	300W/sqm	350W/sqm
Working temperature	-20°C~60°C	-20°C~60°C
IP rating	IP67	IP67
Life span	100,000 hrs	100,000 hrs
Warranty	24 months	24 months



**MPLIED**<sup>®</sup>



SHENZHEN MP LED TECHNOLOGY Co., LTD



<https://www.mpled168.com>



Blog B, Building 10, Huafeng Industrial Zone, Fuyong, Baoan,  
Shenzhen, Guangdong Province. 518103



[mpled@mpled.cn](mailto:mpled@mpled.cn)

